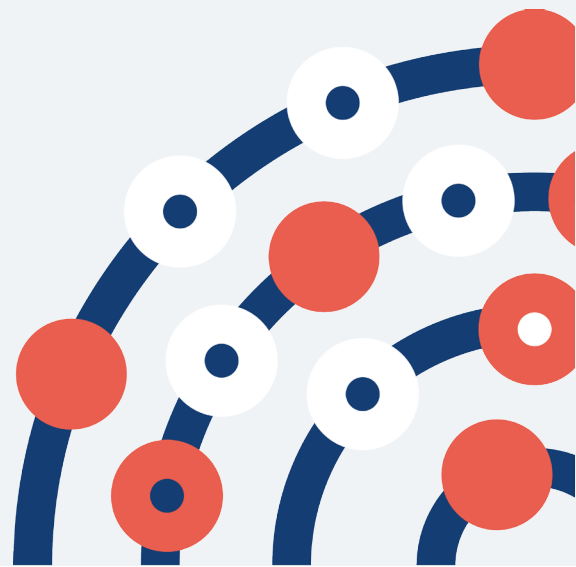


Public Health Research Programme Workshop

28th April 2021

Hosted by the Research Design Service South

Central on behalf of the RDS National Public Health
Community



Contents

Presentations

The NIHR PHR Programme and How it Relates to the Broader Public Health Research Landscape <i>Brian Ferguson, Director, PHR Programme, NIHR Evaluation, Trials and Studies Coordinating Centre (NETSCC)</i>	1
Engaging with Local Authorities and Public Health Practitioners <i>Helen Walters, Public Health Consultant Advisor, NIHR NET.SCC</i>	4
View From the PHR Funding Committee: The Prioritisation Committee, Stage 1 & 2 Processes; Key Elements of Successful PHR Applications, ‘Dos and Don’ts’ <i>Russ Jago, PHR Funding Committee Deputy Chair</i>	8
Preparing for a Successful PHR Application: The Researchers’ Perspective <i>Julie Parkes, Professor of Public Health, University of Southampton</i>	17
Patient and Public Involvement for Public Health <i>Megan Barlow-Pay, PPI Lead, RDS South Central</i>	22
PHR Application Development Awards & the Rapid Funding Scheme <i>Gemma House, Senior Research Manager, NIHR PHR Programme, NETSCC</i>	31
Fellowships in Public Health <i>Mal Palin, NIHR Academy</i>	34
NIHR School for Public Health Research <i>Ashley Adamson, NIHR Senior Investigator & Director, NIHR School for Public Health Research (SPHR)</i>	39
NIHR Research Design Service <i>Lindsay Forbes, RDS South East</i>	45
NIHR Public Health Research Applications & Design Advice (PHRADA) <i>Janine Bestall, PHRADA</i>	49

Contributors	54
--------------------	----

The NIHR PHR Programme and How it Relates to the Broader Public Health Research Landscape

Brian Ferguson, Director, PHR Programme, NIHR Evaluation,
Trials and Studies Coordinating Centre (NETSCC)

Hosted by

NIHR | Research Design Service
South Central

on behalf of the RDS National Public Health Community



**The NIHR PHR Programme and
how it relates to the broader
public health research landscape**

April 2021

Brian Ferguson, Director, PHR Programme,
NIHR Evaluation, Trials and Studies
Coordinating Centre (NETSCC)



NIHR Public Health Research Programme

- Established in 2008, the NIHR Public Health Research (PHR) programme has generated high-quality evidence to support those who plan, commission and use public health services across the UK.
- The PHR portfolio is diverse, encompassing studies evaluating individual-level interventions to improve outcomes in relation to obesity, smoking and mental health through to population-level interventions including the evaluation of minimum unit pricing, the sugar drinks industry levy and the health effects of extending the M74 motorway.



Public Health Research Programme



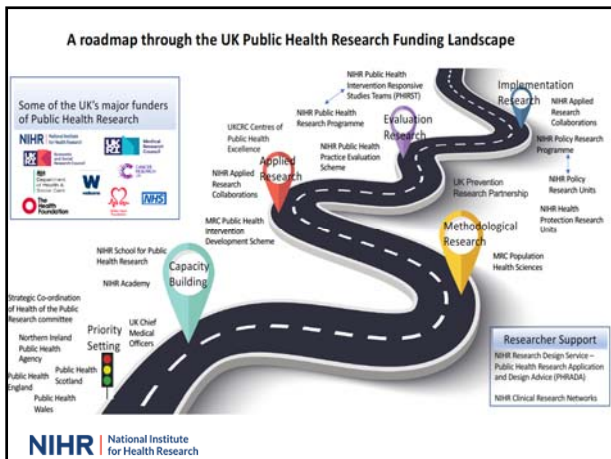
PHR and the wider public health research landscape

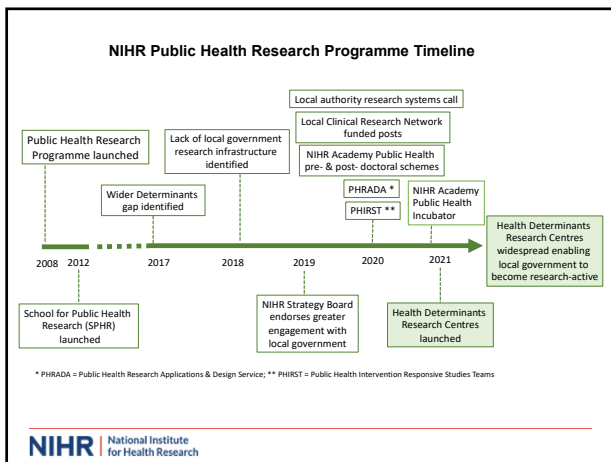
- There is a need for the programme to broaden its focus and consider its role alongside other NIHR activities and wider system partners in building public health research capacity and capability.
- The PHR programme has developed a number of initiatives aimed at strengthening a research culture within local government, building capacity and capability. This will remain a key priority for the programme but has to be sustainable and scaled up.



Public Health Research Programme







NIHR | National Institute for Health Research

Questions?

For more information visit: www.nihr.ac.uk/phr

Enquiries welcome: phr@nihr.ac.uk

Public Health Research Programme
NETSCC

Engaging with Local Authorities and Public Health Practitioners

Helen Walters, Public Health Consultant Advisor, NIHR NETSCC

Hosted by

NIHR | Research Design Service
South Central

on behalf of the RDS National Public Health Community

Engaging with local authorities
and public health practitioners

April 2021

Dr Helen Walters, NIHR Consultant Advisor

Public Health Research Programme
NETSCC

How does PHR engage with Local Authorities?

- Our processes
- PHIRST
- Local Authorities system call
- Our “button”!
- The future

Why engage with Local Authorities?

PHOF Domains (2006-2018)

PHOF Domain	Public Health Awards (%)	Public Health Funding (%)
Improving the wider determinants of health	~8	~5
Health improvement	~35	~38
Health protection	~12	~10
Healthcare public health and preventing premature mortality	~48	~45

How does PHR engage with Local Authorities?

- The process of developing research calls
 - Expertise and peer review
- Committee membership
 - Is this useful for PH practice?
- Evaluating applications
 - Have LAs been involved in development?



**PHIRST: Public Health Intervention
Responsive Studies Teams**

- Four academic teams fully funded and ready to evaluate
- Local authorities propose initiatives to evaluate (3x / year)
- Co-creation of evaluation

Current evaluations include:

- Free universal breakfast club and secondary school meals' project
- Restricting unhealthy food advertising in public transport
- Delivering drugs + alcohol services remotely
- Extra help in Job Centres for those with mental health issues

[Blog](#)



Local Authority Research Systems call

What would it take for your locality to become research active?

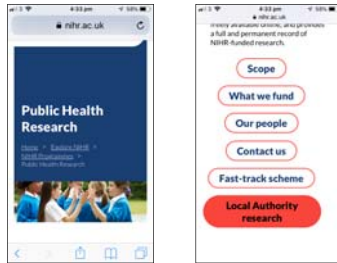
- 14 local authority areas across the UK
- £50k per site across the summer / autumn of 2021
- Identify research assets
- Explore relations between LA and HEIs
- Quantify what more is needed
- Succinct reports straight to DHSC



Public Health Research Programme



The PHR webpage now has a
“Local Authorities” button!



NIHR | National Institute
for Health Research

Our future engagement plans

Expanding PHIRST:

- Currently 4 teams over 3 years
- Expanding to 5 teams over 5 years (+ ongoing)
- Ongoing call for initiatives from LAs

Health Determinants Research Collaborations:

- NIHR strategy board agreement to scope
 - R+D units in a small number of LAs
- “Watch this space!”

NIHR | National Institute
for Health Research

NIHR | National Institute
for Health Research

Questions?

For more information visit:
www.nihr.ac.uk/phr

Enquiries welcome: phr@nihr.ac.uk



Public Health Research Programme
NETSCC

View From the PHR Funding Committee: The Prioritisation Committee, Stage 1 & 2 Processes; Key Elements of Successful PHR Applications, ‘Dos and Don’ts’

Russ Jago, PHR Funding Committee Deputy Chair

Hosted by

NIHR | Research Design Service
South Central

on behalf of the RDS National Public Health Community




**Getting funded by the NIHR
Public Health Research
Programme**

Professor Russ Jago
School for Policy Studies,
University of Bristol




NIHR funds applied research

- Research with the capacity to improve patient and public outcomes and NHS services
- Multiple methodologies - not only trials
- Not
 - Discovery science
 - Work involving animals or animal tissue
- See remit of participating programmes - if in doubt ask



The PHR programme


- Funds the evaluation of non-NHS interventions intended to improve the health of the public and reduce inequalities in health
- **Unable to fund intervention costs**
- National programme open to researchers from across the UK
- Includes both qualitative and quantitative research which evaluates the effectiveness and cost-effectiveness of public health interventions
- Primary outcome measure must be health related



Commissioned and Researcher-led Workstreams

	Types of Research	Who defines the question?	Frequency Per year
Researcher-led	Non-NHS, Primary Research, Evidence Synthesis	Researcher	3 calls per year
Commissioned	Non-NHS, Primary Research, Evidence Synthesis	PHR Programme	As required


www.nets.nihr.ac.uk



PHR Assessment Process


- 1. Screening assessment:**
 - Remit and competitiveness
- 2. Prioritisation Committee:**
 - public health importance
- 3. Funding Committee:**
 - scientific quality
 - feasibility
 - value for money

Public Health Research Programme



PHR programme will not fund

- Intervention costs
- The creation of new interventions, or processes, where active components of existing interventions are recombined to create a new intervention whether or not driven by a logic model or underlying theory
- The design and development of new websites, apps, text messages or other software designed as all or part of creating a new intervention



Developmental studies

- PHR will fund studies with a developmental element to them
- The MRC Public Health Intervention Development Scheme has been set up to support earlystage development of public health interventions
- <https://www.ukri.org/opportunity/public-health-intervention-development-phind-jan-2021/>

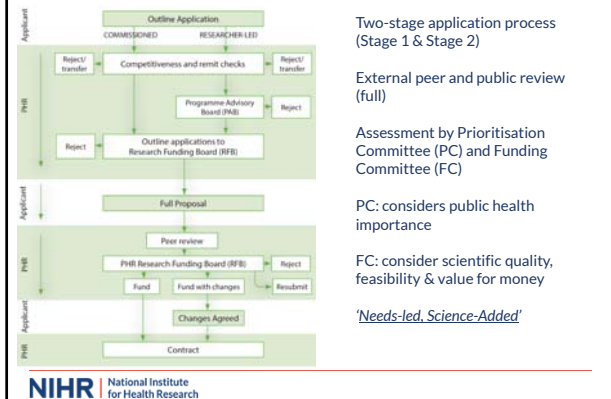
NIHR | National Institute for Health Research

NIHR | National Institute for Health Research

What makes a good application?

A good idea!

The Application Process



Is the research question in remit?

- Is the research question within the remit of the PHR programme?
 - Is there an intervention?
 - Are the intervention costs funded?
 - Is it delivered outside of the NHS?
 - Is the primary outcome measure health related?
- Does it meet the commissioning brief?

- Talk to programme staff or consult NETSCC for advice

Is the research question important?

- The need for the research
 - Public health 'need' should be explicitly stated
 - Will the research provide the evidence needed by decision makers on an important public health issue?
 - How will the results reduce inequalities in health?
 - Will the findings be generalisable and transferable?
 - Has the research question been explained clearly and the importance of the topic made?

Is the research feasible?

- Ambitious but realistic
- Is the presentation and/or methods appropriate for the research question?
- Justify recruitment methods and assumptions
- Explain and justify the sample size calculations
- Experience, track record and appropriateness of the research team
- Have you engaged PPI members

The Project Description

- Use headings
- Clear, simple, succinct, logical
- Cover all the essential elements relevant to the design e.g.
 - Participants
 - Intervention
 - Control
 - Setting
 - Outcomes
 - Sample size and power
 - Analysis



Feasibility & Pilot Studies

- PHR funds feasibility and pilot studies
- However, not 'new' interventions
- Usually based on application of a previous intervention, where reasons for modification, the statistical analysis plan and progression criteria are outlined
- If pilot data – include in application



Picking your team

- Involvement of CTU or RDS from the beginning
- Comment on the track record and experience of the team
- Roles and responsibilities in relation to the project
- Make sure enough statistical support is in place, i.e., a statistician as a co-applicant
- Some team members are specific to the methodology, e.g., health economist & qualitative researchers
- Consider inclusion of other committees, e.g., steering group, patient advisory group etc.
- CRN support



How much can I ask for?

- There is no maximum limit on the duration and costs of proposals to the programme, *but.....*
- Is the research realistically costed and does it offer value-for-money?
- Is the cost to address the disease / health issue in question justified, and does the topic clearly account for the costs requested?

Patient and Public Involvement

- Patient and public involvement is of key importance
- Researchers need to involve patients and the public during the development and delivery and **management** of the research project
- Patients and public will be involved at all stages of the assessment process (referees, board members)
- Funding Committee will explicitly look for evidence of appropriate patient and public involvement

Have an imaginative plan for dissemination

- How will your research really make a difference?
- How will people know about it?
- Plan and cost for dissemination at the outset
- Think imaginatively

'Feedback from funding committees'

- Feedback from funding committees at all stages is meant to be helpful to the applicants
- Applicants should respond to all areas highlighted as necessary by the funding committee

Who is on the committee?

- Behavioural scientists
- Economists
- Epidemiologists
- Lay members
- Policy experts
- Public Health specialists
- Psychologists
- Sociologists
- Statisticians

Common pitfalls

- Application will not answer the research question
- Inadequate detail given on the public health issue
- Inadequate detail given on the intervention to be evaluated
- Lack of evidence of developmental/feasibility work
- Application has not paid enough attention to feedback between Stage 1 and Stage 2 proposal
- Unrealistic / inaccurate costings (both under and over-costing) or no evidence of value for money
- Submission has not been proof-read

Common pitfalls

- Inconsistent accounts of planned research or flawed study design
- Incorrect or inconsistent numbers, e.g., sample size calculations
- Apparent lack of awareness of major or related work
- Insufficient detail or unclear, particularly in the methodology sections – even at Stage 2 proposal
- Gaps in expertise on the research team – even after feedback from the funding board
- Limited or no PPI
- Limited qualitative or economic analysis

NIHR | National Institute
for Health Research



Preparing for a Successful PHR Application: The Researchers' Perspective

Julie Parkes, Professor of Public Health, University of
Southampton

Hosted by

NIHR | Research Design Service
South Central

on behalf of the RDS National Public Health Community

UNIVERSITY OF
Southampton NIHR Applied Research Collaboration
Homes

Preparing for a successful PHR application: a researcher viewpoint

Julie Parkes
Professor of Public Health University of Southampton
28th April 2021

UNIVERSITY OF
Southampton NIHR Applied Research Collaboration
Homes

Overview

- The Research Question
- Assembling the Team
- Timing is everything
- Making Things Work
- The "Process"
- Top Tips

2

UNIVERSITY OF
Southampton NIHR Applied Research Collaboration
Homes

Funded NIHR PHR studies

- Gateway: (commissioned call) a randomised controlled trial (RCT), economic, qualitative and process evaluation to examine the effectiveness of Gateway, an out-of-court community-based intervention programme aimed at improving health and well-being for young adult offenders; victim satisfaction and reducing recidivism
- SERLA: (rapid turnaround) Supporting and enabling health research in a local authority: a qualitative study

3

UNIVERSITY OF
Southampton **NIHR** Applied Research Collaboration
NIHR

The Research Question- getting to the starting line

- Ideally start from strength
 - Seek proposals in your established areas of practice and research with established collaborations
- Consult other teams that have worked in similar settings – lessons learned so can mitigate potential challenges
- Working with different agencies brings different “cultures” and understanding
- Need to spend time understanding each partner’s priorities
 - Research: share understanding
 - Organizational
 - Expectations are explicit

4

UNIVERSITY OF
Southampton **NIHR** Applied Research Collaboration
NIHR

Gateway experiences

- Working with partners in 3rd sector and Hampshire constabulary on other studies in H&J so **existing collaborations**
- HC developed the Intervention idea and wanted evaluation and robust evidence base- very **motivated and ambitious**
- Cross cultural issues and perspectives
 - Reaching understanding and common ground (At start Study team had some idea of Police practice and organisation and Police had some idea of academic processes)
 - Compromise that meets all organizations deliverable and priorities need to know walk aways
 - Steep learning curve but very **willing to learn flexibility**
 - **Single POC in partner organisations**- Stability of team
 - **All Involved in research plan** – incl RDS input
- Early regular and frequent contact ensuring buy in from senior levels- F2F important with non NHS originations

5

UNIVERSITY OF
Southampton **NIHR** Applied Research Collaboration
NIHR

Assembling the Team

- Identify the skill mix required for the research
- Recognise the power of synergy
 - that the whole will be greater than the sum of its parts
 - Statistics
 - Clinical Trial Unit: trial manager specific expertise in subject area
 - Consider health economics
 - PPIE: costed PPIE officer manages PPIE- lived experiences
 - Police
- Explain the process and Align expectations
- No nasty surprises

6

UNIVERSITY OF Southampton NIHR Applied Research Collaboration
Worries

Gateway and SERLA experiences

- The Study Team
- Establish what skills needed in RQ and study design : RCT needed CTU- need to be experienced in study area and regular frequent meetings
- Need a multi disciplinary team with appropriate skill mix
 - Criminology, health economics, trials, qualitative
 - Social care research/network analysis/community consultation/qualitative
- Include non NHS partners Police/DPH
- rapport /can do/ same page/
- PPIE PPIE officer included and costed -manages PPIE for the study

7

UNIVERSITY OF Southampton NIHR Applied Research Collaboration
Worries

The Team -2

- Finance
 - Different organizations have different processes and expectations
 - Overheads!
 - Time course "we need at least x weeks"
 - Fitting the envelope and remit of funder
 - recommend all researchers at early stages to get familiar (formal & informal courses) with costing process and budget holding for PI and Co-PI

8

UNIVERSITY OF Southampton NIHR Applied Research Collaboration
Worries

Making things work

- Meet frequently and regularly: academics & study team and non NHS partners
 - Agenda, minutes or notes and action points
- Consult RDS team as often as needed!
- Be flexible – you won't always be right and your organizations processes may not be the best
- Compromise
 - Be ready to change protocol, costings, personnel
 - BUT know your "walk away" points – don't compromise the research quality
- Expect the unexpected – differences in organizational culture, expectations, pressures, time-lines etc
 - Communication about timelines for the funding process to partners and working with them about possible start dates and set up times for a large study

9

UNIVERSITY OF Southampton NIHR Applied Research Collaboration Women

The Process

- It always takes longer than you think
- Get familiar with the platform – MIS is huge and can be daunting but familiarity makes it easier
 - Always work in Word document with headings required for application from the start
- Use a Gantt chart
 - understand and share the deadlines with the team,
 - Spot the dependencies (finishing task 1 before starting task 2)
 - Plan vacation, wi-fi overseas etc for EVERYONE
- A single lead/small writing group to ensure a single "voice" taking account all views
- Prepare for Stage 2
 - Rapid responses required
 - Balance acquiescence with robust defense
 - Have whole team on stand-by
 - Be prepared to change members and costing – alert finance of deadlines

10

UNIVERSITY OF Southampton NIHR Applied Research Collaboration Women

Top Tips

- Select proposals that build on existing strengths and partnerships
- Ensure shared understanding of the proposal
- Assemble a team with all the talents
- Cost in a PPIE officer that can manage the work stream -vital in application and meeting ongoing challenges
- Flexibility and compromise
- Understand the process
- Establish NOW PPIE group in areas of research interest so prepared- especially disadvantaged/marginalised groups
- Contact other teams with successful applications or working in same setting for lessons learned and challenges post funding so can address then pre applications
- Stressful but can mitigate this with planning and teamwork

11

Patient and Public Involvement for Public Health

Megan Barlow-Pay, PPI Lead, RDS South Central

Hosted by

NIHR | Research Design Service
South Central

on behalf of the RDS National Public Health Community

Public Involvement in Public Health Research

Megan Barlow-Pay
Public Involvement Lead, RDS SC
m.s.barlow-pay@soton.ac.uk

Participation

- Patients who are recruited into a study as 'subjects'.

Engagement

- Publicising and sharing information and results about research and research findings

Involvement

- An active partnership between researchers and patients and the public in the research process. Patients and the public are involved in decision-making.

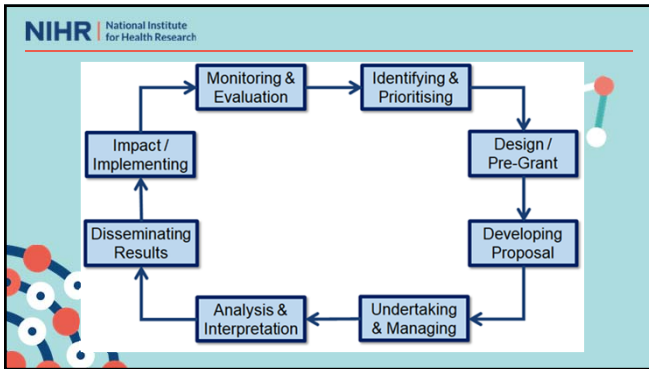
NIHR definition of PPI is 'research being carried out 'with' or 'by' members of the public rather than 'to', 'about' or 'for' them'.

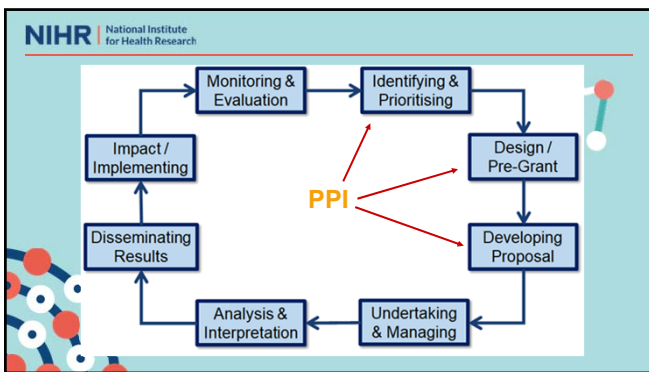
Community involvement Public participation

Stakeholder collaboration

Stakeholder involvement Service user involvement

Community participation





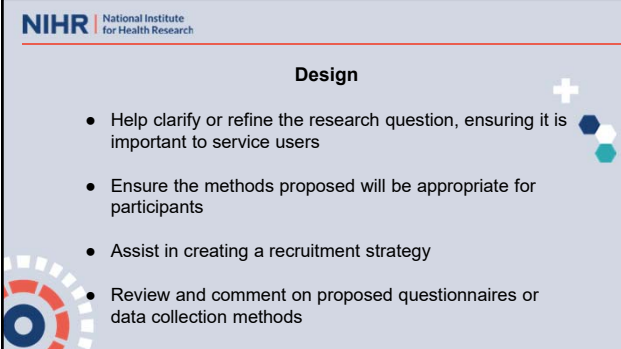
Identifying and Prioritising

- Work with public groups, service users, not for profit organisations or wider stakeholders to understand key priorities for public health research
- Collaborate with these individuals or groups to help refine the research question, ensuring its importance and that you are capturing meaningful outcome measures

NIHR National Institute for Health Research

Design

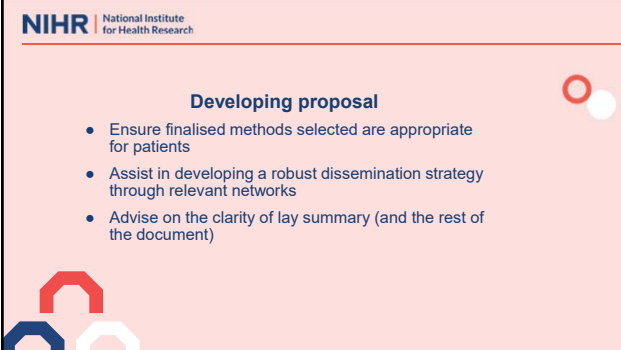
- Help clarify or refine the research question, ensuring it is important to service users
- Ensure the methods proposed will be appropriate for participants
- Assist in creating a recruitment strategy
- Review and comment on proposed questionnaires or data collection methods

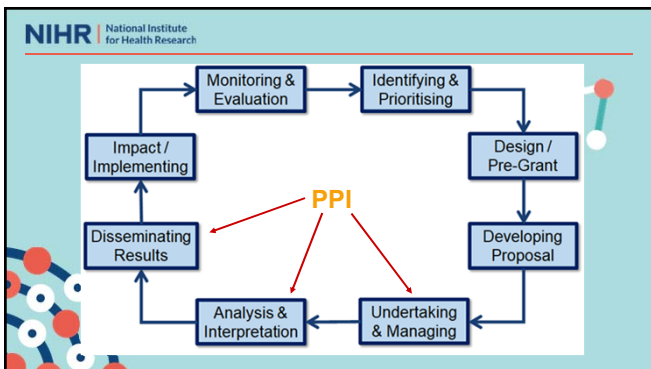


NIHR National Institute for Health Research

Developing proposal

- Ensure finalised methods selected are appropriate for patients
- Assist in developing a robust dissemination strategy through relevant networks
- Advise on the clarity of lay summary (and the rest of the document)

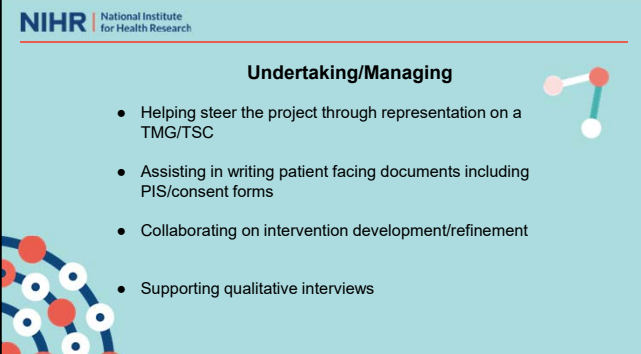




NIHR National Institute for Health Research

Undertaking/Managing

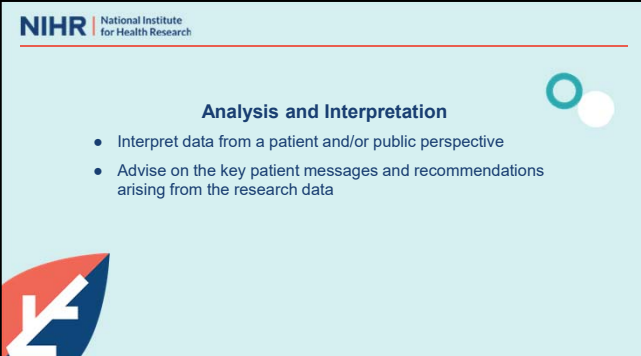
- Helping steer the project through representation on a TMG/TSC
- Assisting in writing patient facing documents including PIS/consent forms
- Collaborating on intervention development/refinement
- Supporting qualitative interviews



NIHR National Institute for Health Research

Analysis and Interpretation

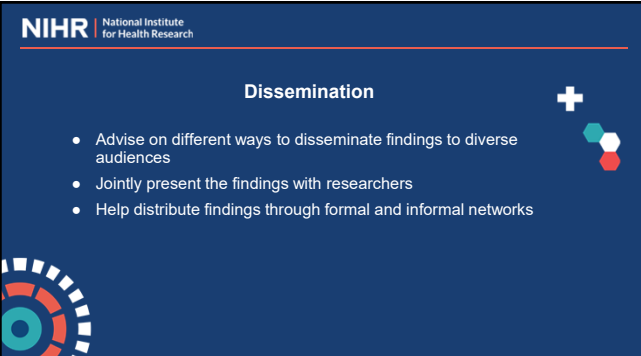
- Interpret data from a patient and/or public perspective
- Advise on the key patient messages and recommendations arising from the research data



NIHR National Institute for Health Research

Dissemination

- Advise on different ways to disseminate findings to diverse audiences
- Jointly present the findings with researchers
- Help distribute findings through formal and informal networks



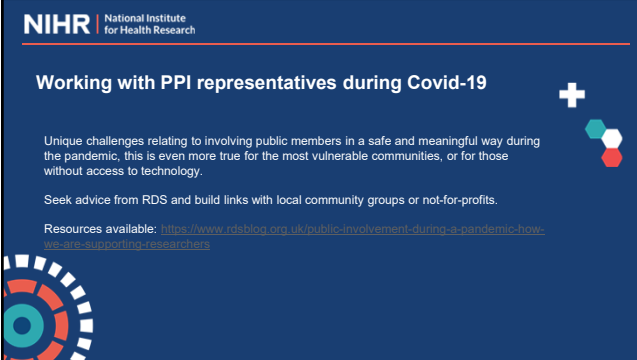
NIHR National Institute for Health Research

Working with PPI representatives during Covid-19

Unique challenges relating to involving public members in a safe and meaningful way during the pandemic, this is even more true for the most vulnerable communities, or for those without access to technology.

Seek advice from RDS and build links with local community groups or not-for-profits.

Resources available: <https://www.rdsbbg.org.uk/public-involvement-during-a-pandemic-how-we-are-supporting-researchers>



NIHR National Institute for Health Research

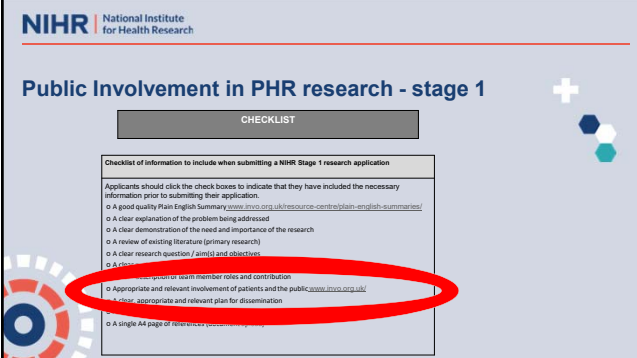
Public Involvement in PHR research - stage 1

CHECKLIST

Checklist of information to include when submitting a NIHR Stage 1 research application

Applicants should click the check boxes to indicate that they have included the necessary information prior to submitting their application:

- A good quality Plain English Summary www.invo.org.uk/resource-centre/plain-english-summaries/
- A clear explanation of the problem being addressed
- A clear demonstration of the need and importance of the research
- A review of existing literature (primary research)
- A clear research question / aim(s) and objectives
- A clear description of team member roles and contribution
- Appropriate and relevant involvement of patients and the public www.invo.org.uk/
- A clear, appropriate and relevant plan for dissemination
- A single A4 page of www.invo.org.uk/



NIHR National Institute for Health Research


Public Involvement in PHR research - stage 2

Patients and public can be involved in every stage of a research project, from developing a proposal through to dissemination and evaluation. In your description you will need to say who will be involved and why.

Explain why your approach to public and patient involvement is appropriate for this proposal.

Describe how you will support and enable patient and public involvement in your research (e.g.: payments, training).


PHR guidance notes



NIHR National Institute for Health Research

“Please describe how patients and the public have been involved in developing this proposal”


- Who are your public involvement representatives
- How were they identified?
- What have they done to **influence** the research proposal
- Think identifying/prioritising, design & grant development
- Give specific examples
- E.g. “PPI feedback was that too many appointments at hospital may affect adherence. Subsequently, we have altered the design so all follow ups assessments can be done at 3, 6, 9 & 12 months, alongside the patient’s regular appointments”



NIHR National Institute for Health Research

“Please describe the ways in which patients/service users, carers and the public will be actively involved in the proposed research, including any training and support provided”

- Detailed plans for continued involvement
- Think undertaking & managing, interpretation & analysis, and dissemination
- How will service users etc. be supported?




NIHR Research Design Service South Central

PPI lead

There should be a named person with appropriate skills and experience who is responsible for leading the PPI element within the project.

The role of the PPI lead can be undertaken by any of the co-applicants or a named team member, who has the **relevant skills, experience and authority to be accountable, represent, manage and embed** patient and public involvement in all aspects of the research study/programme.

This role should be a budgeted and resourced research team member.



NIHR National Institute for Health Research

Roles and responsibilities

- Setting and refining overall PPI strategy as the project progresses
- Liaising and planning with research team regarding PPI activities throughout research project lifecycle
- Acting as a single point of contact for all public contributors
- Recruiting public contributors and working with them to develop support and training needs
- Ensuring that involvement is aligned to [UK Standards for Public Involvement](#)
- Communicating to public contributors the project status, providing feedback on PPI activities and their impact
- Planning and organising the logistics (including access and support needs) for all project related meetings
- Writing up PPI sections with public contributors for project reports

NIHR National Institute for Health Research

PPI Co-applicants

'We encourage the inclusion of public co-applicants, where appropriate. Please include a clear description of their role and the reasons why a public co-applicant is joining the team'.


'Co-applicants are those individuals with responsibility for the day to day management and delivery of the project. Co-applicants are considered part of the project team and are expected to share responsibility for its successful delivery. Collaborators normally provide specific expertise on particular aspects of the project but who do not share in the responsibility for the delivery of the project'.

PHR guidance notes

NIHR National Institute for Health Research



Thinking about diversity

- Area of strategic importance within NIHR
- Issues relating to lack of representation have been further highlighted and exacerbated during the COVID-19 pandemic
- Consider the demographics and range of views you are seeking. Are people with different ethnicities/genders/ages/economic positions etc likely to have different views or different barriers?
- This may be of particular importance if you are looking at health inequalities or an issue that particularly affects certain more vulnerable populations



Public Involvement Funds

There are small funds available to help support payment of PPI from regional RDSs.
Contact your local RDS to discuss eligibility and application process.



PHR Application Development Awards & the Rapid Funding Scheme

Gemma House, Senior Research Manager, NIHR PHR
Programme, NETSCC

Hosted by

NIHR | Research Design Service
South Central

on behalf of the RDS National Public Health Community



PHR Application Development Awards & the Rapid Funding Scheme

April 2021

Gemma House, Senior Research Manager,
PHR Programme, NIHR Evaluation, Trials and Studies Coordinating Centre (NETSCC)



Application Development Awards

New addition to the PHR schemes.

- Used when the evidence base to understand a problem is at varied stages of development and could benefit from further underpinning development work that will add to the current knowledge base and will ultimately support and inform applications to a pending commissioned call for full scale studies.
- Applicants are expected to make a clear link between the underpinning development work and their proposed application to the pending commissioned call. The commissioning brief is available for reference when applying to the ADA to ensure the end point is visible to applicants.



Up to £50,000 over a maximum of six months. Direct to Stage 2 application.



Application Development Awards

Currently advertised:

- 21/36 Application Development Award - Mental health and wellbeing among young women - Closes: 13:00 on 12 August 2021
- 21/37 Application Development Award - Core outcome data sets for population health research - Closes: 13:00 on 12 August 2021



Public Health Research Programme



Rapid Funding Scheme

- Offers the opportunity to apply for baseline data collection or feasibility work for time limited natural experiments.
- Up to £50,000 over a maximum of six months. Direct to Stage 2 application. The call is always open.
- Applicants need to request to access the scheme with a one page summary justifying the unique time limited nature of the work. The applicant must be clear how this work will lead to a future evaluation in remit for PHR.
- If the case is made the Programme Director will provide approval for a Stage 2 proposal to be developed and assessed by a subcommittee.



Rapid Funding Scheme - examples

- Assessing the impact of zero and low emissions control interventions upon air quality in Oxford City; baseline data collection and feasibility study
- Assessing the impact of the Mayor's schools air quality audit recommendations in reducing pupils' exposure to poor air quality feasibility and base line data collection
- Baseline data on urban non-vehicular traffic prior to traffic clean air zone implementation
- The long-term health and wellbeing impacts of Healthy New Towns: a six-month feasibility study of Healthy New Town demonstrator sites in England





Questions? 

For more information visit:
www.nihr.ac.uk/phr

Enquiries welcome: phr@nihr.ac.uk

 Public Health Research Programme
NETSCC

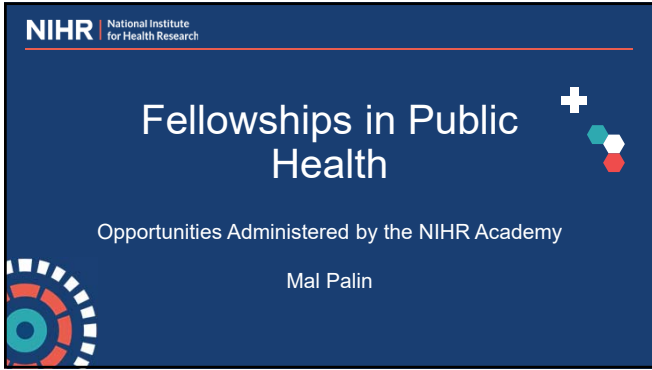
Fellowships in Public Health

Mal Palin, NIHR Academy

Hosted by

NIHR | Research Design Service
South Central

on behalf of the RDS National Public Health Community



The Organisation of Programmes and Schemes

The fellowship opportunities offered by the NIHR Academy comprise personal research training awards.

Whilst it is clearly important that the research being funded is sound and of value to the betterment of health and social care, it is also vital that, in each case, it serves as the most appropriate vehicle for the personal development of the awardee.

As such, all calls are researcher-led, with the applicant responsible for proposing a research project of their own choosing and design.

The NIHR Academy doesn't run any calls or schemes dedicated to particular fields of health and social care research (eg public health), but rather in targeted support of particular professional groups, employees within particular settings, or with particular career aspirations (eg a practitioner academic role)

NIHR National Institute for Health Research

The NIHR Academy Research Remit – Public Health

- The overall remit of the NIHR is early translational (experimental medicine), clinical and **applied health research**, and social care research.
- For personal doctoral-level awards the proposal:
 - must be for clinical and applied health research, or social care research
 - must have clear potential for directly benefiting patients/service users, carers and the public (but recognising the training element of the research)
 - can involve patients/service users and/or carers; samples or data from these groups; other people who are not patients/service users and/or carers; populations; health technology assessment; or health or care services research
 - At doctoral-level, early translational (experimental medicine) research is funded through the NIHR early translational (experimental medicine) infrastructure and particularly the NIHR Biomedical Research Centres (BRC) training programmes.
- For personal post-doctoral level awards, early translational (experimental medicine) research will be within remit. A clear and plausible path to patient/service user, carer or public benefit must, however, be demonstrable.
- NIHR does not support basic research or work involving animals or their tissue.
- If the work involves biomarkers:
 - research that tests whether application of new knowledge can improve treatment or patient outcomes, and has obvious direct potential benefit, is within remit; this might include application of known biomarkers, or other prognostic factors, to refine and test novel therapeutic strategies
 - research that aims only to elucidate mechanisms underpinning disease, or identify risk factors for disease or prognosis (including search for biomarkers) is out of remit.
- The NIHR is also prepared to support high quality research into **medical education** (defined broadly as education for healthcare providers) and methodological research. It is expected that the research will have the potential to have practical application and the potential impact on patients/service users, carers and the public must be made clear.

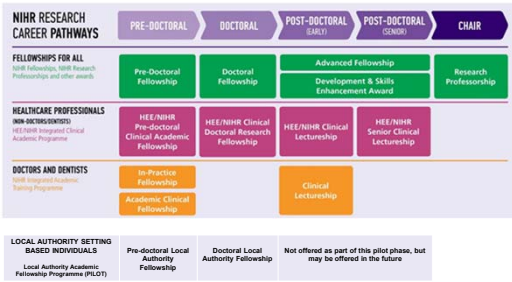
NIHR National Institute for Health Research

The NIHR Academy Remit – Public Health (continued)

Do you fund research requiring observational/applied epidemiological methods?

We fund research according to the potential for patient/public benefit rather than according to specific methodologies. We therefore fund research using a wide range of study designs including observational and applied epidemiological methods. Any study that uses observational and applied epidemiological methods should be an evaluation of an intervention itself, or have a clear, credible and articulated trajectory to further research within NIHR remits. An applied epidemiological component can also be considered as part of a larger project or programme of work.





Which Scheme For You?

Your experiences and background **combined with** your career aspirations will determine which opportunities you are eligible to access and should aim for.

After determining which schemes you **could** apply to, you should consider which scheme you **should** apply to.

With the exception of the NIHR Fellowships Programme, all of our programmes of schemes are designed to support aspirant practitioner academics.



Individuals of any professional background wishing to develop academically

NIHR RESEARCH CAREER PATHWAYS	PRE-DOCTORAL	DOCTORAL	POST-DOCTORAL (EARLY)	POST-DOCTORAL (SENIOR)	CHAIR
FELLOWSHIPS FOR ALL <small>NIHR Fellowships, NIHR Research Professorships and other awards</small>	Pre-doctoral Fellowship	Doctoral Fellowship	Advanced Fellowship <small>Development & Skills Enhancement Award</small>		Research Professorship

- Fellowships For All – are 'personal awards' and have been designed to support people at various points of their development to become future researcher leaders, from initial pre-doctoral training to senior post-doctoral research.
- Open to all professional backgrounds (so including economists, statisticians, architects, planners, geographers, environmental scientists etc. working in public health).

NIHR National Institute for Health Research

Non-medically qualified individuals wishing to develop as practitioner academics

NIHR RESEARCH CAREER PATHWAYS	PRE-DOCTORAL	DOCTORAL	POST-DOCTORAL (EARLY)	POST-DOCTORAL (SENIOR)	CHAIR
HEALTH & SOCIAL CARE PROFESSIONALS <small>HEE/NIHR Integrated Clinical Academic Programme</small>	HEE/NIHR Pre-doctoral Clinical Academic Fellowship	HEE/NIHR Clinical Doctoral Research Fellowship	HEE/NIHR Clinical Lectureship	HEE/NIHR Senior Clinical Lectureship	
LOCAL AUTHORITY & LOCAL AUTHORITY SUPPORTING SERVICE EMPLOYEES (EXCLUDING NHS EMPLOYEES) <small>NIHR Local Authority Academic Fellowship Programme (pilot)</small>	NIHR Pre-doctoral Local Authority Fellowship (pilot)	NIHR Doctoral Local Authority Fellowship (pilot)			

- The HEE/NIHR Integrated Clinical Academic (ICA) Programme is open to health and care professionals, excluding doctors and dentists, holding registration with one of the ICA approved regulatory bodies.
- The NIHR Local Authority Academic Fellowship (LAAF) Programme is open to all employees (excluding doctors and dentists) of local authorities and local authority supporting services (excluding NHS delivered services).

BOTH PROGRAMMES SUPPORT THE COMBINATION OF HEALTH OR SOCIAL CARE RESEARCH AND RESEARCH LEADERSHIP WITH CONTINUED PRACTICE AND PROFESSIONAL DEVELOPMENT

NIHR National Institute for Health Research

Medically qualified/registered individuals

NIHR RESEARCH CAREER PATHWAYS	PRE-DOCTORAL	DOCTORAL	POST-DOCTORAL (EARLY)	POST-DOCTORAL (SENIOR)	CHAIR
DOCTORS AND DENTISTS <small>NIHR Integrated Academic Training Programme</small>	In-Practice Fellowship <small>Academic Clinical Fellowship</small>		Clinical Lectureship		

- The NIHR Integrated Academic Training (IAT) Programme is open to all doctors and dentists; including those undertaking Public Health Speciality Training

COMBINE CLINICAL RESEARCH AND RESEARCH LEADERSHIP WITH CONTINUED CLINICAL PRACTICE AND CLINICAL DEVELOPMENT

NIHR National Institute for Health Research

More Information

Programme specific website links:

NIHR Fellowships Programme

<https://www.nihr.ac.uk/explore-nihr/academy-programmes/fellowship-programme.htm>

HEE/NIHR Integrated Clinical Academic Programme

<https://www.nihr.ac.uk/explore-nihr/academy-programmes/hee-nihr-integrated-clinical-academic-programme.htm>

NIHR Integrated Academic Training Programme

<https://www.nihr.ac.uk/explore-nihr/academy-programmes/integrated-academic-training.htm>

NIHR Local Authority Academic Fellowships Programme (pilot)

<https://www.nihr.ac.uk/explore-nihr/funding-programmes/nihr-local-authority-academic-fellowship-programme-and-associated-opportunities.htm>

Email: academy-awards@nihr.ac.uk



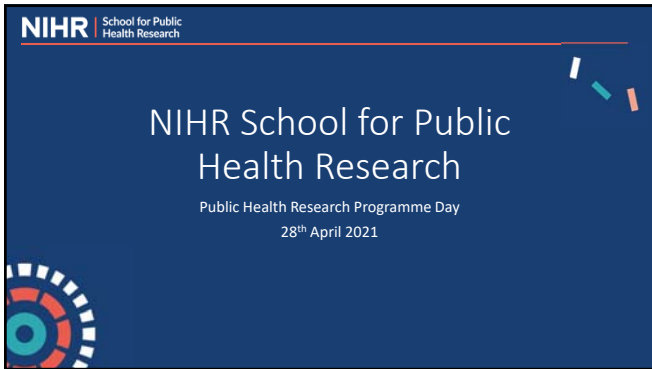
NIHR School for Public Health Research

Ashley Adamson, NIHR Senior Investigator & Director, NIHR
School for Public Health Research (SPHR)

Hosted by

NIHR | Research Design Service
South Central

on behalf of the RDS National Public Health Community



NIHR School for Public Health Research

- Established in April 2012 renewed 2017 by national competition
- Budget of >£20 million over five years (now ~£25M)
- Partnership between 8 leading academic centres with excellence in applied public health research in England
- Aims to build the evidence base for effective public health practice

NIHR School for Public Health Research @NIHRSPHR

NIHR SPHR - Aims

- The School aims to increase and improve the **evidence base for cost-effective, generalisable, and equitable public health interventions**. It aims to create an environment where first class applied public health research, focused on the needs of the public, can thrive, and where local practitioners, policy makers and the public can engage with research from the earliest planning stages. It also aims to support practitioners and policy makers to actively seek out high quality research evidence to inform their decisions by making our outputs practical, relevant, accessible and timely.
- Its primary purpose is to **conduct research to improve the evidence base and to support the translation into practice of cost-effective interventions**.

NIHR School for Public Health Research @NIHRSPHR

NIHR SPHR – funding overview

- Early phase projects
- Research programmes & cross-cutting themes
- Funding for early career researchers (ECRs)
- Public Health Practice Evaluation Scheme (PHPES)
- Summer internships for undergraduate students
- Pre-doctoral fellowships
- PhD studentships
- Post-doctoral launching fellowships
- All funding for current quinquennium is now committed (2017-2022)
- New quinquennium of funding ~£25M confirmed to start April 2022 (~ March 2027) – School membership tbc.

NIHR School for Public Health Research @NIHRSPHR

NIHR School for Public Health Research

Research programme

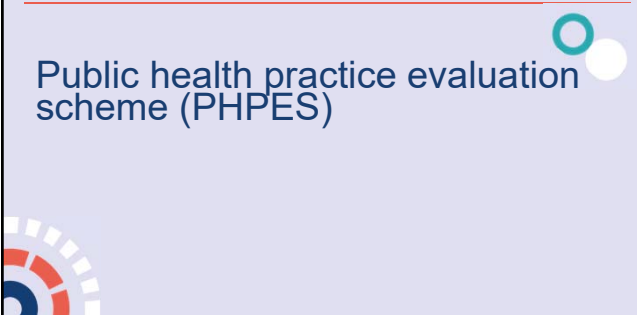
Research programmes & cross-cutting themes

- Three research programmes each of approx. £3.1-£3.9M
 - Children, young people & families
 - Public mental health
 - Places & communities
- Three cross-cutting themes each of approx. £500K
 - Health inequalities
 - Efficient and equitable public health systems
 - Changing behaviour at population level

NIHR School for Public Health Research @NIHRSPHR

NIHR School for Public Health Research

Public health practice evaluation scheme (PHPES)



PHPES 2020-2022

Map of PHPES Registrations of Interest (ROI), Stage 1 & 2 and awarded applications

- Black dots represent Registrations of Interest (ROI) that did not develop into Stage 1 application (n=40)
- Red dots represent Stage 1 application form requested/ sent (n=44 of which 44 submitted)
- Orange dots represent Stage 2 applications (not funded) (n=6)
- Green dots represent awarded projects (n=10)

- 91 ROIs from across England
- Stage 1 – 51 application forms requested
- 44 Stage 1 submitted
- 19 invited to Stage 2
- 16 Stage 2 submitted
- 10 Awards made

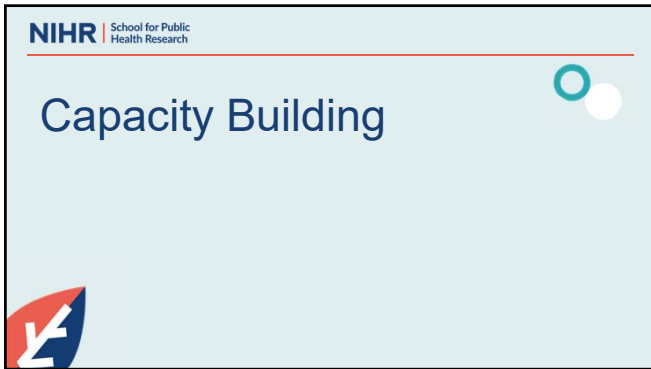


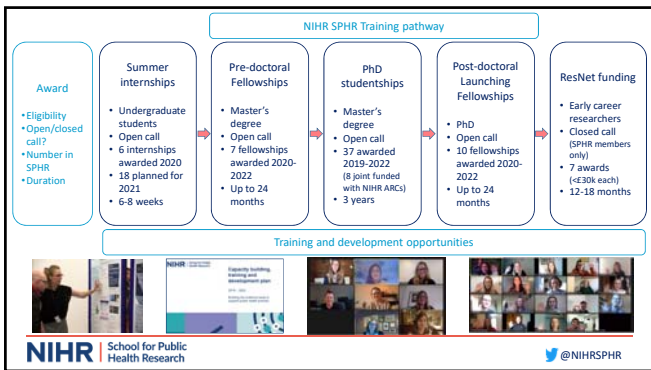
NIHR School for Public Health Research @NIHRSPHR

PHPES 2019-2022

- Evaluating the impact of an oral health improvement programme across the South West**
This study evaluates a new service aimed at reducing tooth decay in very young children (under 5 years) in the South West of England.
January 2020 - December 2023
- South Tyneside Best Start in Life Alliance**
This project explores a new approach to helping children and families with high levels of need in South Tyneside.
January 2020 - December 2021
- Evaluating the Digital Health Contact service**
This study evaluates the acceptability and utility of the Digital Health Contact online health and wellbeing questionnaire in identifying and meeting the current health needs of secondary school children in the Yorkshire, Lancashire and National areas.
January 2020 - June 2021
- Evaluating the Peer Education Project**
This study looks at how the Mental Health Foundation's Peer Education Programme (PEP) is delivered in schools, how it can best be embedded within wider school life and how it can be improved to be of most benefit to the widest number of young people.
January 2020 - December 2021
- The development and implementation of School Superzones in Local Authorities across the London Region**
This project will develop and implement School Superzones across London to create health hubs for children and young people in their own areas.
February 2021 - January 2022
- Together an Active Future**
This project establishes an intervention called 'Together an Active Future', which aims to increase physical activity levels among children in Primary Schools.
January 2020 - December 2021
- Private landlord licensing policy in the London Borough of Hackney**
This research project will evaluate Hackney's 'selective licensing scheme' and private landlord licensing policies.
June 2020 to December 2020
- Housing support and coordination**
This project explores the impact of housing co-ordinators on the process of ensuring children's housing needs are met when leaving home.
January 2020 - June 2021

NIHR School for Public Health Research @NIHRSPHR





NIHR School for Public Health Research - Annual Scientific Meeting 2021

Registration now open!

The NIHR School for Public Health Research will hold its seventh Annual Scientific Meeting across two days from 28th - 29th May 2021.

About this Event

Working together for better Public Health

The School will hold its seventh Annual Scientific Meeting across two days from 28th - 29th May 2021.

We will have a number of live online speakers and debates to discuss the longer term consequences of COVID-19 and future thinking for public health, with particular focus on the health inequalities that have been exposed and worsened for the pandemic, the policy implications and how we deal with that as a community.

Date And Time
Thu, 28 May 2021, 12:00 - Fri, 29 May 2021, 12:00 BST
Add to Calendar

Location
Online Event

NIHR School for Public Health Research @NIHRSPHR



NIHR Research Design Service

Lindsay Forbes, RDS South East

Hosted by

NIHR | Research Design Service
South Central

on behalf of the RDS National Public Health Community



The NIHR Research Design Service
How can it help with applications to the NIHR Public Health Research Programme

Professor Lindsay Forbes
RDS Adviser

28th April 2021


NIHR Research Design Service

- National network (n=10 services around England)
- Support for all health and social care practitioners and researchers to develop grant applications
- Advice is confidential and free of charge
- Strength of support for public health research (rather than clinical research) is growing



RDS Advisers

- practising researchers with expertise across a range of disciplines and methods
- lead adviser for each project will
 - support applicants
 - co-ordinate input
 - arrange pre-submission review panel or mock interview



What RDS offers

Principles

- Friendly and constructive
- Input tailored for you – not 'one size fits all'
- Team approach
- Support for developing grant applications to NIHR (all funding programmes) and other national competitive calls

NIHR | Research Design Service
South East

What happens after you request RDS support

```

    graph LR
      A[Initial appraisal] --> B[Specialist guidance]
      B --> C[Further support]
  
```

Initial appraisal	Specialist guidance	Further support
Review and assess needs <ul style="list-style-type: none"> • Development of rationale, aims, methods and potential impact? • Team? • Public/community involvement? 	Advise on specifics <ul style="list-style-type: none"> • Design support • Public/community • Dissemination • Governance 	Exploit networks <ul style="list-style-type: none"> • Public/community • Other researchers • Clinical Research Network

NIHR | National Institute for Health Research

Types of support RDS offers

Developing the bid Shaping the rationale Building the team (including members of public) Deciding on methodological approach	Reviewing the application Clear? •Persuasive? Impactful? Achievable?
Advising on methods Public engagement and involvement Quantitative methods Qualitative methods Health economics	Advising on other key aspects Budgeting, costing, managing, arranging governance Equality, diversity and inclusion Negotiating the bureaucracy

NIHR | Research Design Service
South East

What RDS doesn't provide

- Supporting student projects
- Supporting projects where you are not seeking external funding
- Writing your application/filling in forms
- Requesting costings



When to approach RDS

- **Come forward at an early stage**
 - ideas that are not fully formed are welcome
 - funded projects have nearly always taken several months to develop
 - even when ideas and methods are very clearly articulated, collaborative writing of the research plan can take many weeks
 - the actual form-filling can be very time-consuming





Thank you

Link to your local RDS can be found here
<https://www.nihr.ac.uk/explore-nihr/support/research-design-service.htm>



NIHR Public Health Research Applications & Design Advice (PHRADA)

Janine Bestall, PHRADA

Hosted by

NIHR | Research Design Service
South Central

on behalf of the RDS National Public Health Community




Public Health Research Application and Design Advice
PHRADA

Janine Bestall

www.rds-yh.nihr.ac.uk/phrada

PHRADA

National pilot scheme to *“increase the number and proportion of high quality applications for funding” to NIHR PHR*



PHRADA – what we do

- We support applications to specific NIHR PHR commissioned calls.
- We aim to better understand the advice and support needs of applicants.
- Goal is to increase the chance of applications being funded.

Who we support

- Investigators preparing research proposals for submission to NIHR PHR commissioned calls.
- Public health practitioners, academics and other investigators from public health, academic, NHS and other organisations.
- PHR programme to provide feedback to them from clients and to exchange knowledge.



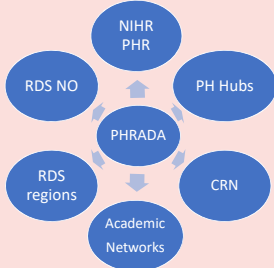
Who we are

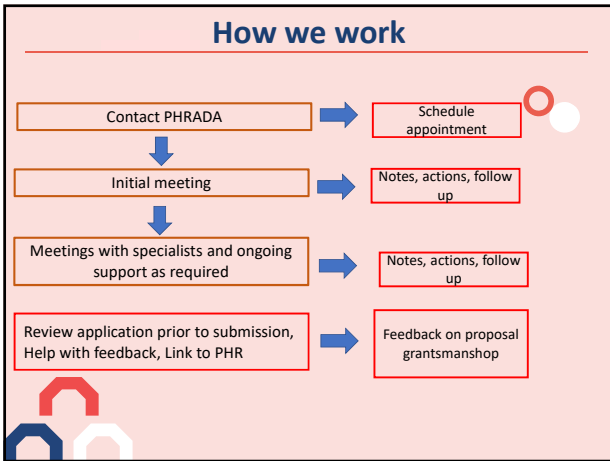
A small team of research methodologists from across England, with expertise in public health research:

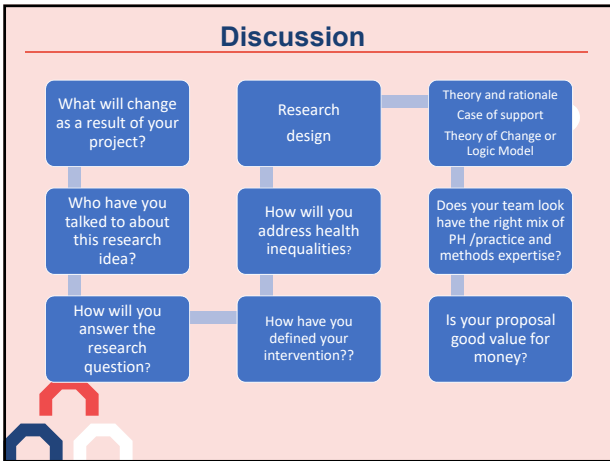
- Health economics
- Statistics
- PPIE/ Impact
- Qualitative and quantitative methods
- Literature review/ appraisal skills



Our networks







Contact us for a consultation

Contact PHRADA for an appointment
<https://www.rds-yh.nihr.ac.uk/phrada/>

- You don't have to have a full prepared application.
- A brief summary of how you will answer the question and proposed methods.
- Any questions you have for us or the PHR programme.
- A draft proposal if you have one.



NIHR | Research Design Service

Contact Us

Email: louise.hayes@ncl.ac.uk
j.bestall@leeds.ac.uk

Website: <https://www.rds-yh.nihr.ac.uk/phrada/>



The slide features a dark blue background with a white cross icon in the top right corner. A map of England is shown, divided into nine regions: North East and North Central, Yorkshire and The Humber, North West, East Midlands, West Midlands, East of England, South Central, South East, and South West. In the bottom left corner, there is a circular graphic with concentric rings in white, red, and blue.

Contributors

Ashley Adamson	NIHR Senior Investigator & Director, NIHR School for Public Health Research (SPHR)
Megan Barlow-Pay	PPI Lead, RDS South Central
Andrew Bateman	Director, RDS East of England
Janine Bestall	PHRADA
Susan Bowett	School Manager, NIHR School for Public Health Research (SPHR)
Jo Brett	One-to-one adviser, RDS South Central
Annalisa Casarin	One-to-one adviser, RDS East of England
Erica Cook	One-to-one adviser, RDS East of England
Brian Crosbie	One-to-one adviser, RDS East Midlands
Lisa Douet	One-to-one adviser, RDS South Central
Doyo Eniki	One-to-one adviser, RDS East Midlands
Brian Ferguson	Director, PHR Programme, NIHR Evaluation, Trials and Studies Coordinating Centre (NETSCC)
Lindsay Forbes	Research Adviser, Public Health, RDS South East
Catherine Gedling	Director at NIHR Research Design Service North West
Nicola Hall	One-to-one adviser, RDS North East and North Central
Rebecca Harris	One-to-one adviser, RDS North West
Gemma House	Senior Research Manager, NIHR PHR Programme, NETSCC
Sophie Hyndman	Deputy Director & Senior Research Adviser, RDS South Central
Russ Jago	PHR Funding Committee Deputy Chair
Dorit Kunkel	One-to-one adviser, RDS South Central
Steven Lane	One-to-one adviser, RDS North West
Brian Leask	Administrator, RDS South Central
Anna Maguire Elliott	Administrator, RDS South Central
Christopher Newby	One-to-one adviser, RDS East Midlands
Mal Palin	NIHR Academy
Julie Parkes	Professor of Public Health, University of Southampton
Issy Reading	One-to-one adviser, RDS South Central
Wanda Russell	One-to-one adviser, RDS West Midlands
Phil Saunders	Administrator, RDS South Central
Dia Soilemezi	One-to-one adviser, RDS South Central
Liz Stokes	One-to-one adviser, RDS South Central
Helen Walters	Public Health Consultant Advisor, NIHR NETSCC
Martin Williams	Director, RDS National Office